





**Size:** fits from UK 8 (12) - US 4 (8) - EU 34 (38)

**Skill Level:** advanced

**How much yarn:** 12 balls (each ball 50g and 75m)

**Naturalpaca** yarn (46% Alpaca, 32% Wool, 22% Cotton)  
shade no. 31140

**Needles:** A pair of 7.00mm knitting needles

A Double-pointed (Dp) needle

**Sewing needle:** Yarn needle with rounded point

## STITCHES

**Using needles:** garter stitch (g st)

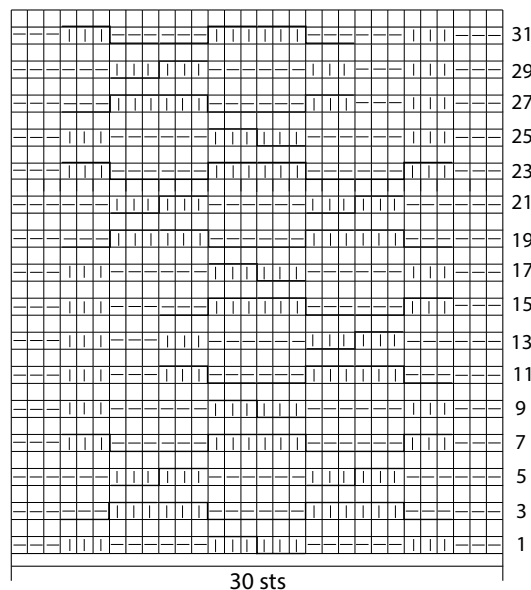
Stocking stitch (st st) - K2, P2 rib - K2, P3 rib - K2, P4 rib

**TRELLIS MOTIF:** (worked over 30 sts) follow diagram and key. Each diagram square corresponds to 1 stitch and 1 row. On even rows work stitches as they appear. Rep the Motif 32 rows throughout. Work crossed sts as follows: **6 Crossed Left stitches (C6F)** = slip 3 sts onto Dp needle, hold to the front, K3 sts, K3 sts from Dp needle.

**6 Crossed Left stitches A (C6Fkp)** = slip 3 sts onto Dp needle, hold to the front, K3 sts, P3 sts from Dp needle.

**6 Crossed Right stitches A (C6Bkp)** = slip 3 sts onto Dp needle, hold to the back, K3 sts, P3 sts from Dp needle.

## TRELLIS MOTIF



KEY | = K1 — = P1 TTT|TTT = C6F  
TTT|TTT = C6Fkp TTT|TTT = C6Bkp

On even rows work stitches as they appear

Each diagram square corresponds to 1 stitch and 1 row

## TENSIONS

12 sts and 16 rows measure 10cm square over stocking stitch with 7.00 mm needles. The 30 Trellis Motif sts measure approx 15cm in width. Take time to check tensions before starting work: it is essential to work to the stated tensions to achieve success.

## INSTRUCTIONS

**Back:** with 7.00mm needles cast on 43 sts and, for beg border, work 6 rows in garter st, corresponding to 3cm. Cont to work in stocking st, working last 3 sts in g st for

border. When work measures 50cm from beg and **76 rows** have been worked, continue for **yoke** as follows: **77th row:** cast on 30 new sts, work them with Trellis Motif ending row K. Work as established **62 rows**, corresponding to 39cm, then cast off the 30 yoke sts and cont to work on rem stitches. When work measures 136cm from beg, corresponding to 214 rows in st st, work 6 rows in g st for end border, then cast off.

**Front:** with 7.00mm needles cast on 43 sts and, for beg border, work 6 rows in garter st, corresponding to 3cm. Cont to work in stocking st, working first 3 sts in g st for border. When work measures 46cm from beg and **74 rows** have been worked, for **1st opening** work as follows: **75th row:** K to end. **76th row:** P15, K22, P3, K3. **77th row:** K8, cast off 18 sts, K17. **78th row:** P15, K2, cast on 18 new sts (above corresponding cast-off sts), K2, P3, K3. **79th row:** K to end. **80th row:** P15, K22, P3, K3. AT THE SAME TIME, WHILE WORKING OPENING, on **76th row** cast on the new sts for starting yoke and from **77th row** work as given for Back. When 1st opening has been completed, cont to work 54 rows as given before, corresponding to 34cm, then work the 6 rows needed to form **2nd opening**. Cont to work **74 rows** as given before, corresponding to 46cm, then work 6 rows in g st for end border and cast off.

## FINISHING

Sew shoulder-sleeve seams and a yoke side seam. For **neck**, on RS of work, pick up 68 sts along yoke and work 6 rows K2, P4 rib. On 7th row start to work K2, P3 rib working P1, P2tog, P1 instead of P4 and cont to work K2, P3 until 14th row made. On 15th row work \* K2, P1, P2tog rep from \* to end and work other 7 rows K2, P2 rib. Cast off. Sew neck and other yoke side seam.

